

PANORAMA CONSTRUCTION COMPANY



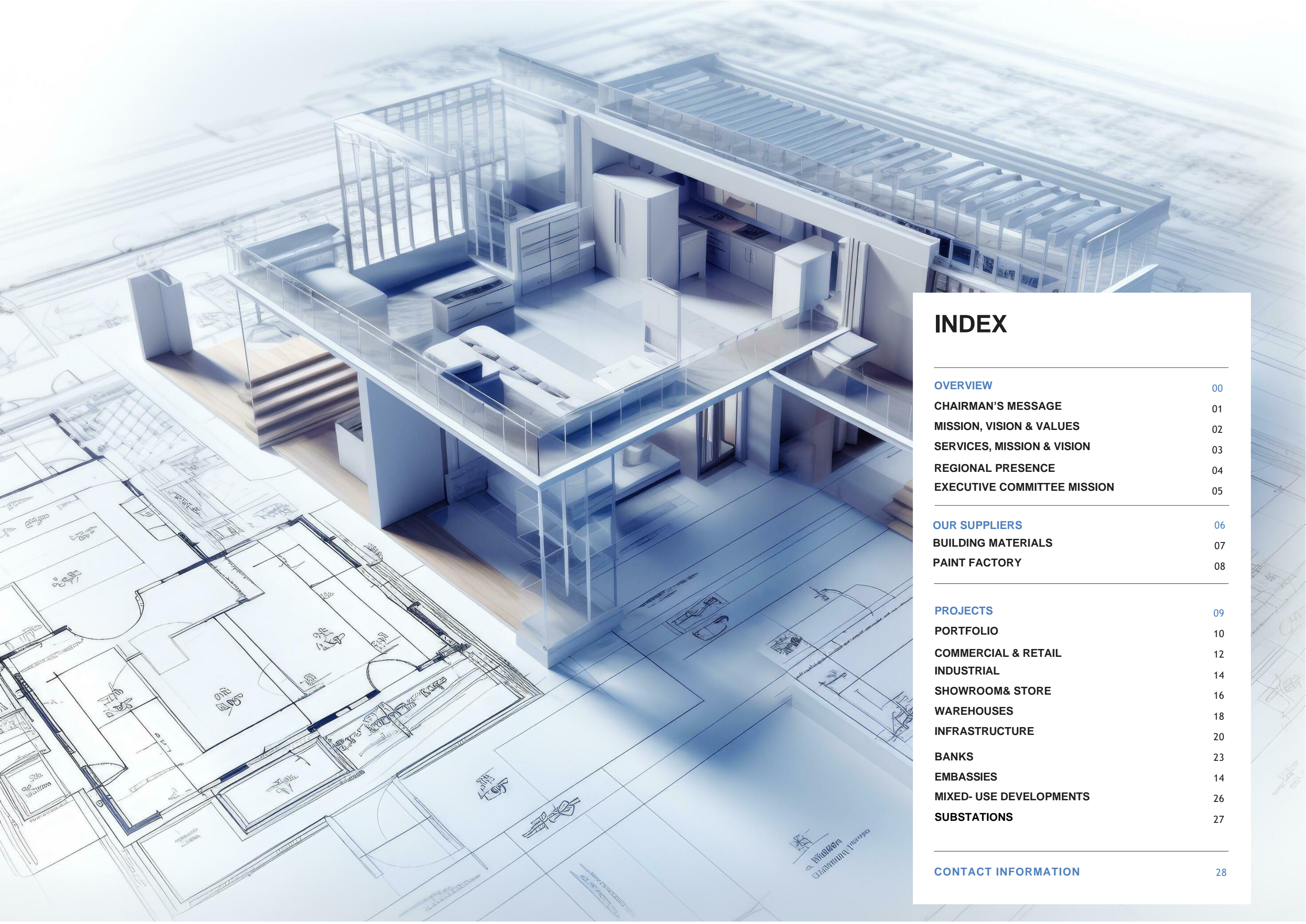
COMPANY PROFILE

PANORAMA CONSTRUCTION
“Building Beyond Boundaries”



2025

www.panoramaconstructionco.com
+211 92 833 3331 | +211 92 205 0000
Atlabara C, Tombra Road, Juba, South Sudan



INDEX

OVERVIEW	00
CHAIRMAN’S MESSAGE	01
MISSION, VISION & VALUES	02
SERVICES, MISSION & VISION	03
REGIONAL PRESENCE	04
EXECUTIVE COMMITTEE MISSION	05
OUR SUPPLIERS	06
BUILDING MATERIALS	07
PAINT FACTORY	08
PROJECTS	09
PORTFOLIO	10
COMMERCIAL & RETAIL	12
INDUSTRIAL	14
SHOWROOM& STORE	16
WAREHOUSES	18
INFRASTRUCTURE	20
BANKS	23
EMBASSIES	14
MIXED- USE DEVELOPMENTS	26
SUBSTATIONS	27
CONTACT INFORMATION	28

BUILDING BEYOND BOUNDRIES

Great things in life are rarely accomplished alone. It takes teamwork to build something beautiful, strong and enduring. **PANORAMA** has been a trusted, hard-working partner at the side of real estate developers in the region for over 16 years, collaborating on iconic, world-class projects across the South Sudan and Africa.

Our role is to successfully deliver the client's vision into reality using our history of experience, vast resources and dedicated team members. We attribute our accomplishments to decades of commitment to our clients, and a deep understanding of their interests and goals; providing real value in building tomorrow's skylines, today.

This is our passion and the foundation of a hard-earned reputation. It is and will remain at the heart of who we are as a company, as we continue to evolve with new strategies and technical mastery, maintaining our position at the forefront of our industry. Together, we're building a legacy of excellence for years to come.

Solomon K Adal
[**CEO**]

BRINGING TOMORROW'S [ADVANTAGE], TODAY

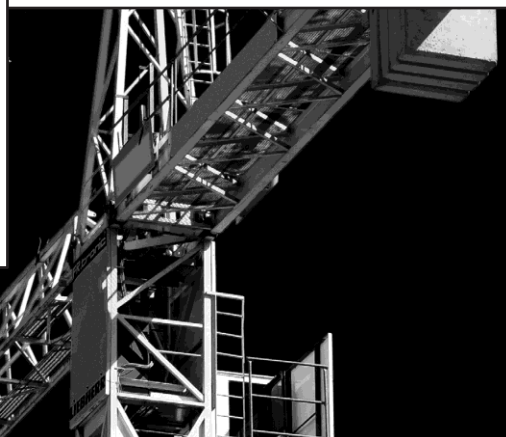
PANORAMA is a multi-award-winning international construction company with more than 16 years of expertise in South Sudan and Africa.

Our vast experience, forward-thinking innovations and commitment to the highest standards in professionalism, safety and efficiency have made us a trusted partner to the developers of some of the area's most iconic buildings and landmarks.

INNOVATIVE [MACHINERY]

Innovation means never being satisfied with an old way of doing things. It's a restless need to find new and improved ways of achieving results.

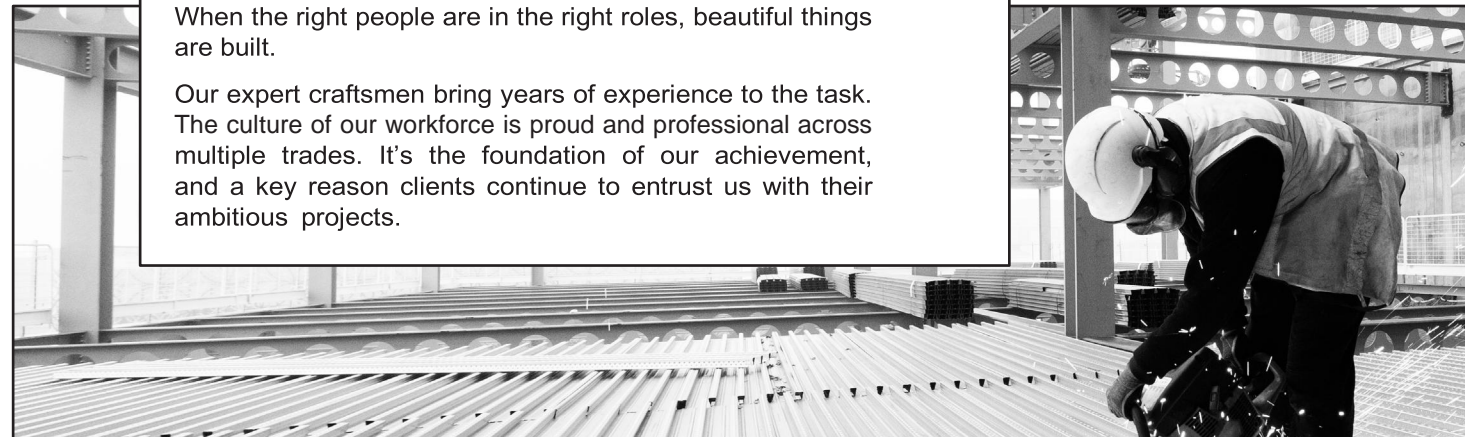
Our instinct for innovation extends to the tools we bring to the job. Our modern plant, machinery and equipment is carefully maintained and kept up to date in order to meet the demands of today's construction challenges.



PROFESSIONAL [MANPOWER]

When the right people are in the right roles, beautiful things are built.

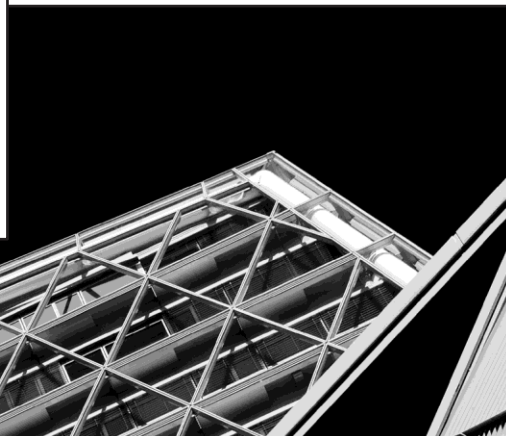
Our expert craftsmen bring years of experience to the task. The culture of our workforce is proud and professional across multiple trades. It's the foundation of our achievement, and a key reason clients continue to entrust us with their ambitious projects.



ACCOMPLISHED [MASTERY]

There is simply no substitute for expertise, and there's no shortcut to getting there. Mastery of our trade comes from over 16 years in business.

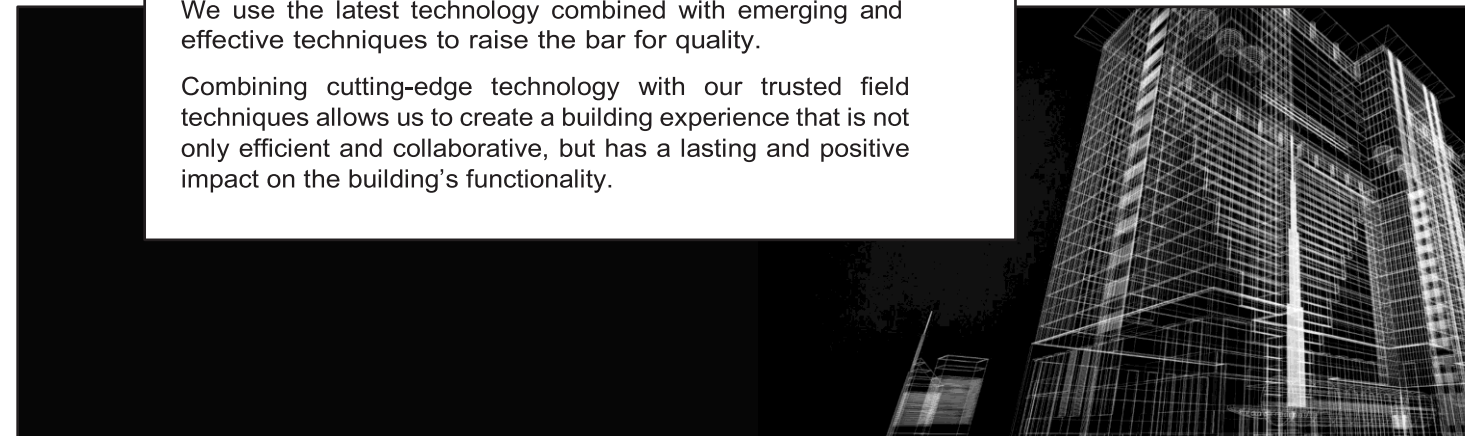
Our know-how is on continuous display in the multitude of functional, beautiful and prestigious development we have safely delivered to our clients.






CUTTING-EDGE [TECHNOLOGY]

We use the latest technology combined with emerging and effective techniques to raise the bar for quality.

Combining cutting-edge technology with our trusted field techniques allows us to create a building experience that is not only efficient and collaborative, but has a lasting and positive impact on the building's functionality.



OUR [SERVICES]

-  **Engineering, Planning and BIM Analysis**
-  **Commercial and Residential Buildings**
-  **Government and Social Housing**
-  **Infrastructure and Road Construction**
-  **Oil and Industrial Plant Construction**
-  **Precast Concrete and Prefabricated Warehouses**
-  **Steel and Wooden Construction**
-  **Renewable Energy, Solar Energy and Smart Systems**
-  **Purchase and Installation of Industrial Equipment**

OUR [MISSION]

To Serve the Region With Reliable, High- Quality Construction Through Innovative Machinery, Professional Manpower and the Accomplished Mastery that Comes with

OUR [VISION]

A Strong and Trusted Partner – Building a Lasting Legacy for Our Employees, Our Clients and Our Nation.

∞ [United] in Approach

We build relationships that last. That is because our interests are always aligned with yours. From the word 'go', we consider ourselves as part of your team and every decision is made with your deadline and goals in mind, culminating in successful outcomes. What is more, our commitment continues even after delivery. It is a unity of purpose shared by everyone at [PANORAMA], where experts from multiple fields come together as one. We bring combined experience and expertise to every job, each team member taking pride in their contribution to our collective strength to continue shaping the legacy of tomorrow

💡 [Engineering] Solutions

Engineering is in our DNA and it influences the way we solve every problem. We cherish the challenges that come with complex projects because they lead to solutions that create the outstanding.

✓ [Construction] Done Well

Expertise comes from a strong desire to learn. We are always acquiring and applying new knowledge in order to improve safety and efficiency while reducing our impact on the natural environment. When you team up with [UNEC], you get quality workmanship at excellent value executed in a responsible and sustainable way.

∞ [Company] Unlimited

We are a forward-looking company that gets excited about the future. As technology and techniques evolve, we are always there at the cusp of change to ensure projects are executed in the most modern and efficient way. Innovation inspires us and it is a hallmark of our work.

[SOLID] REGIONAL PRESENCE

MANY HANDS, MANY PROJECTS ONE TEAM, [UNITED]

Wherever we're working, you'll find the highest standards applied to all aspects of operations. Our commitment to best practices touches everything we do, guiding every decision related to onsite safety, project management and environmental responsibility.



SSD

- Juba [HQ]
- All over the country

SLE

- Freetown
- Bo

UAE

- Dubai

OUR TEAM



SOLOMON K ADAL
[CHIEF EXECUTIVE OFFICER]

Mr. Solomon is the Executive Chairman, Group CEO and Founder of Panorama Group. He has dedicated the past 16 years to the vision for Panorama Group and its position as one of South Sudan's largest construction companies with over 12 years of experience and knowledge, and an ongoing active role in all aspects of the company's development, strategy and daily operations, CEO. SOLOMON K ADAL remains the central driving force at the heart of PANORAMA and its future legacy



AHMAD ACHKAR
[ADMINISTRATION MANAGER]

Mr. Ahmad oversees the administrative aspects of construction projects, ensuring smooth operations by managing contracts, processing billing, tracking project documents, coordinating schedules, supervising subcontractors, and maintaining compliance with regulations, all while working closely with project managers to deliver projects on time and within budget.



EHAB DAKWAR
[CHIEF OPERATING OFFICER]

Eng. Ehab Dakwar oversees day-to-day operations across all projects for the past 15 years, as well as business development and client relations. A strong believer in hard work and persistence, his emphasis is on maximizing productivity and efficiency through lean principles and technological innovation.

BUILDING FUTURES VISION

OUR STRATEGY ORE VALUES

We are committed to differentiating ourselves by continuously increasing our expertise in executing large and sophisticated buildings, oil & gas facilities and infrastructure projects while maintaining a highly selective risk management process for every new project and venture.

PANORAMA will always operate at the highest level of safety, quality and cost effectiveness, to ensure we remain the most attractive to our clients, employees and partners.



SUPPLIERS

OUR SUPPLIERS

BUILDING MATERIALS & LOGISTICS
MANUFACTURING

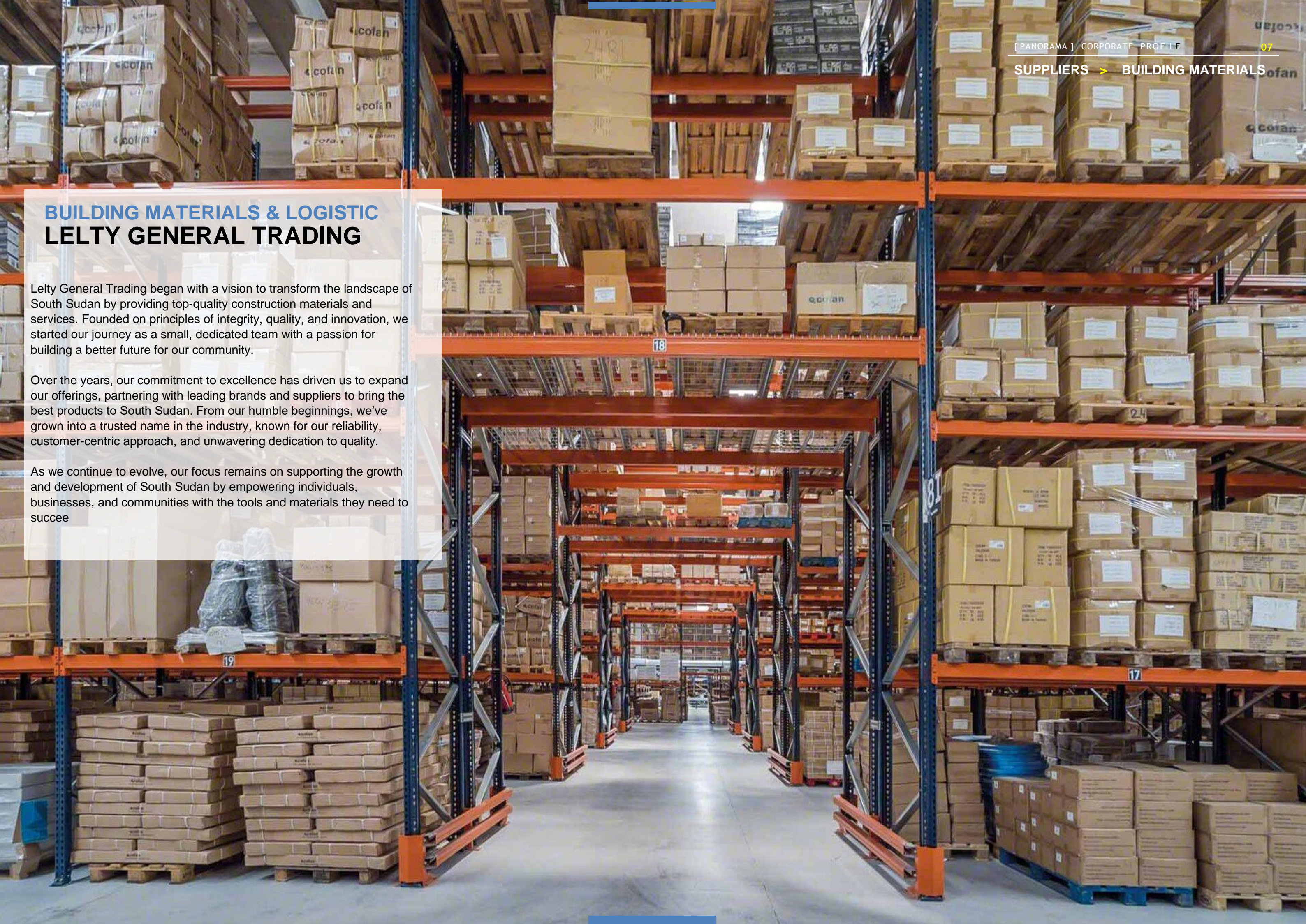
07
08

BUILDING MATERIALS & LOGISTIC LELTY GENERAL TRADING

Lelty General Trading began with a vision to transform the landscape of South Sudan by providing top-quality construction materials and services. Founded on principles of integrity, quality, and innovation, we started our journey as a small, dedicated team with a passion for building a better future for our community.

Over the years, our commitment to excellence has driven us to expand our offerings, partnering with leading brands and suppliers to bring the best products to South Sudan. From our humble beginnings, we've grown into a trusted name in the industry, known for our reliability, customer-centric approach, and unwavering dedication to quality.

As we continue to evolve, our focus remains on supporting the growth and development of South Sudan by empowering individuals, businesses, and communities with the tools and materials they need to succeed.



MANUFACTURING BRAVO PAINT

At Bravo Paints, we're passionate about transforming spaces into vibrant, inspiring environments. Proudly serving South Sudan, we are dedicated to providing high-quality paints that blend affordability and performance.

Our flagship product, BRAVO PAINT Budget Matt Emulsion, is specially designed to meet the diverse needs of our customers, delivering excellent coverage and a smooth, matte finish that elevates your walls.



PROJECTS

PROJECTS

PORTFOLIO	10
HEAD OFFICE & SHOWROOM	12
PAINT FACTORY	14
SHOWROOM & STORE	16
WAREHOUSE	18
PREFAB WAREHOUSES	19
ROAD CONSTRUCTION	20
BANK OF SIERRA LEONE	23
NIGERIAN EMBASSY RENOVATION	24
AMERICAN EMBASSY EXTENTION	25
MAERSK LINE HQ	26
ELECTRICAL SUBSTATION	27

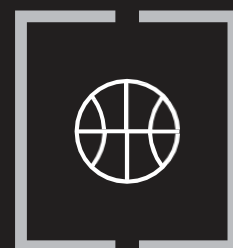
OUR PROJECTS & ACHIEVEMENTS



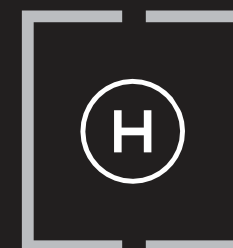
08
GOVERNMENT
INSTITUTION



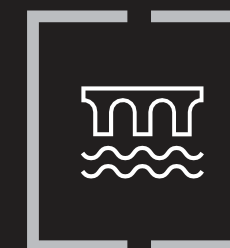
5
EDUCATION
& CULTURE



3
LEISURE
& SPORT



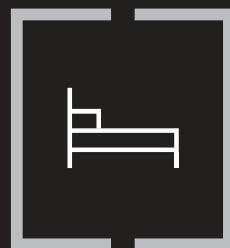
3
HEALTHCARE



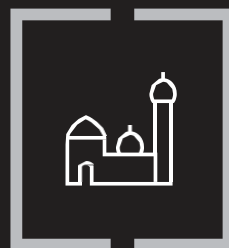
18
INFRASTRUCTURE



6
INDUSTRIAL



9
LUXURY HOTELS
& RESORTS



5
Religious
Institutions



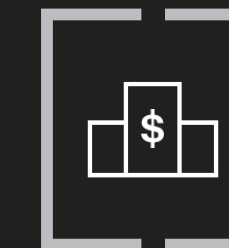
40+
VILLAS



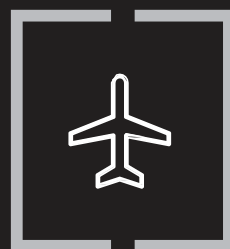
3
MIXED- USE
DEVELOPMENTS



30+
RETAIL
& MALLS



4
BANKS



1
AIRPORTS



1
RECREATIONAL
FACILITIES

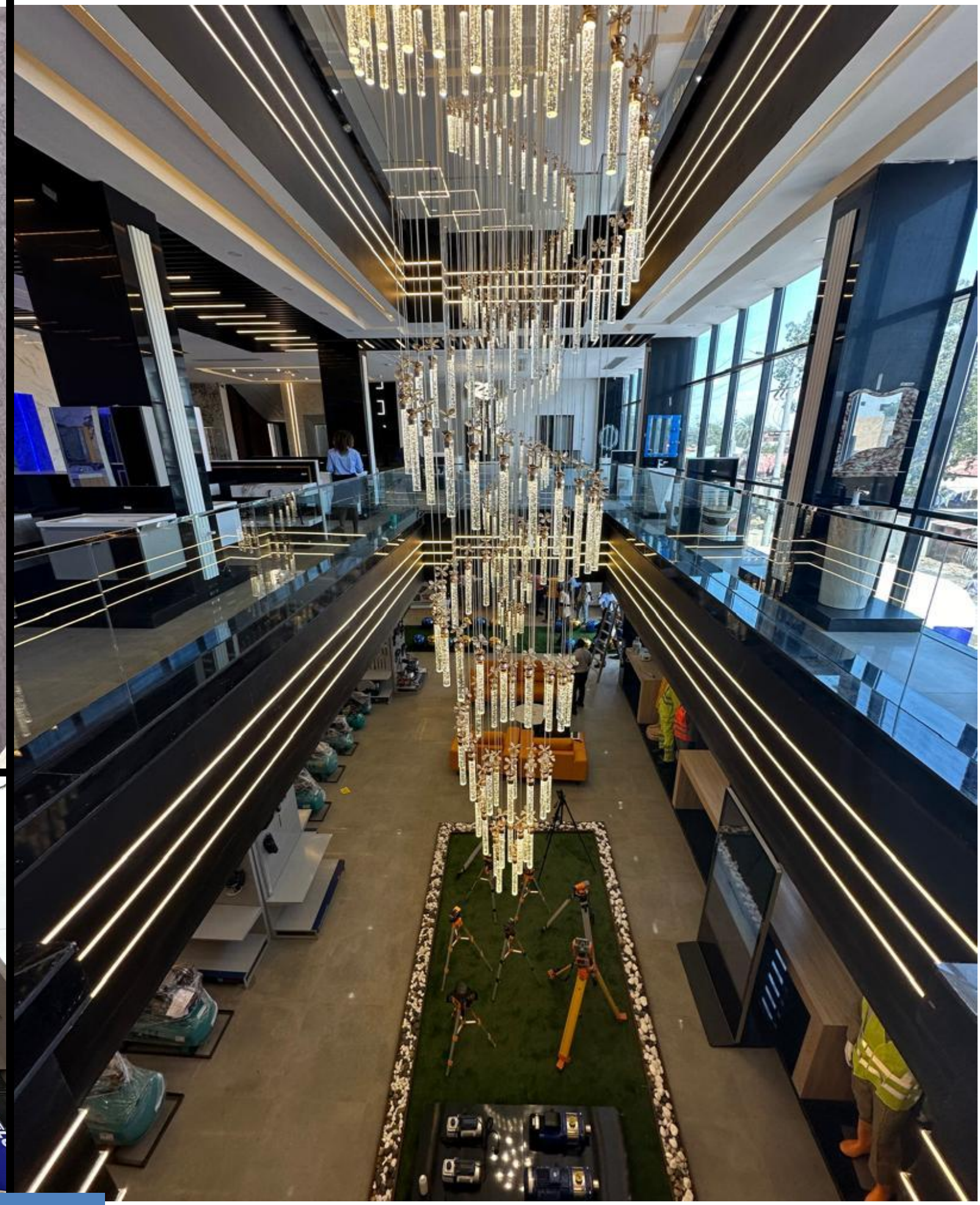
PROJECTS

COMPLETED PROJECTS

HEAD OFFICE & SHOWROOM

LOCATION	:	ATLABARA, JUBA, SSD
CLIENT	:	LETTY GENERAL TRADING
CONSULTANT	:	RSP
BUA	:	2,750 SQM
STATUS	:	COMPLETED







PROJECTS > INDUSTRIAL

PAINT FACTORY

LOCATION	: Gumbo Near the bridge (CES), Juba, SSD
CLIENT	: BRAVO PAINT
CONSULTANT	: ENG EHAB
BUA	: 1,900 SQM
STATUS	: COMPLETED





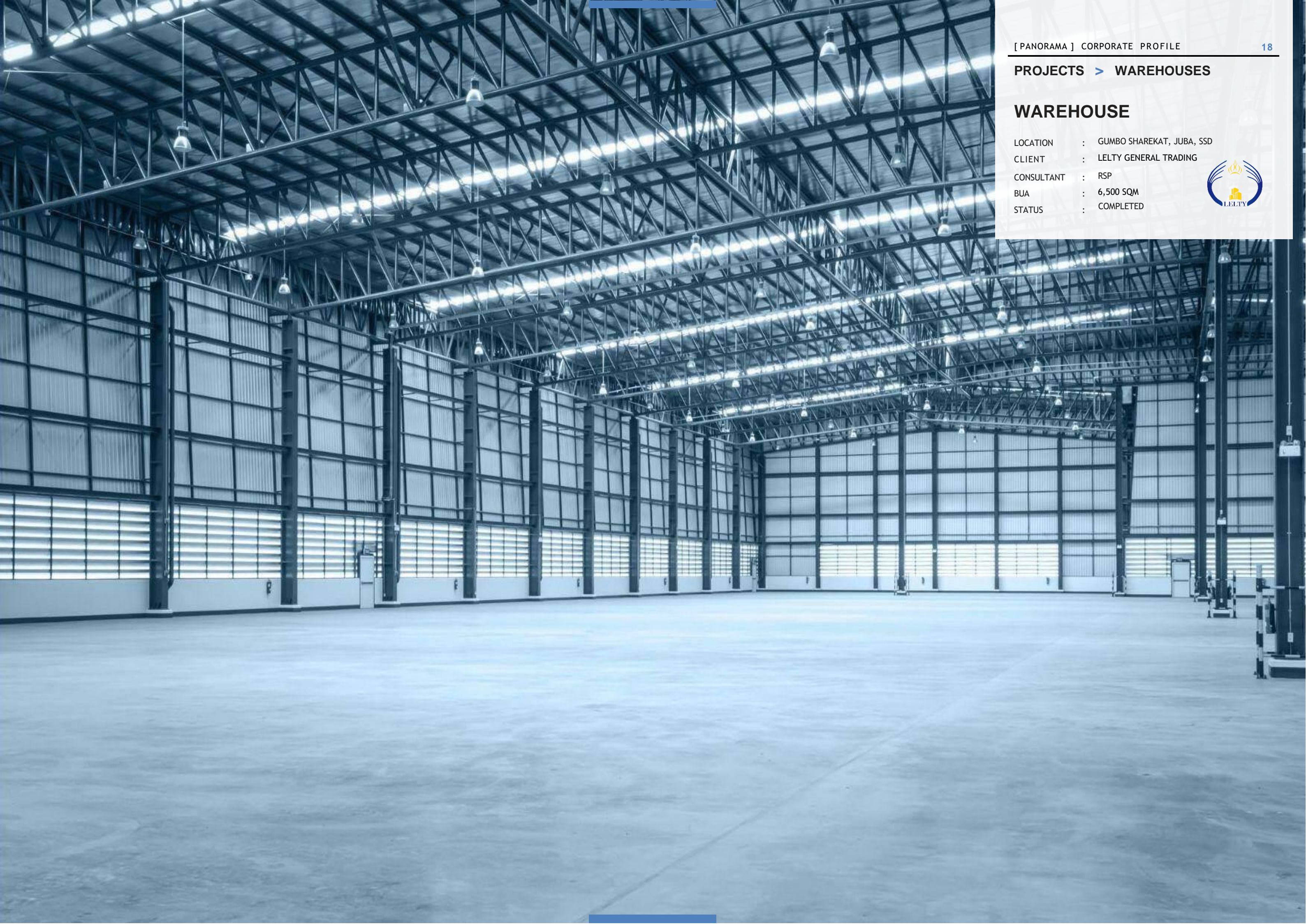
PROJECTS > COMMERCIAL & RETAIL

SHOWROOM & STORE

LOCATION : GUDELE, JUBA, SSD
CLIENT : LELTY GENERAL TRADING
CONSULTANT : RSP
BUA : 1,350 SQM
STATUS : COMPLETED







PROJECTS > WAREHOUSES

WAREHOUSE

LOCATION : GUMBO SHAREKAT, JUBA, SSD
CLIENT : LELTY GENERAL TRADING
CONSULTANT : RSP
BUA : 6,500 SQM
STATUS : COMPLETED



PROJECTS > WAREHOUSES

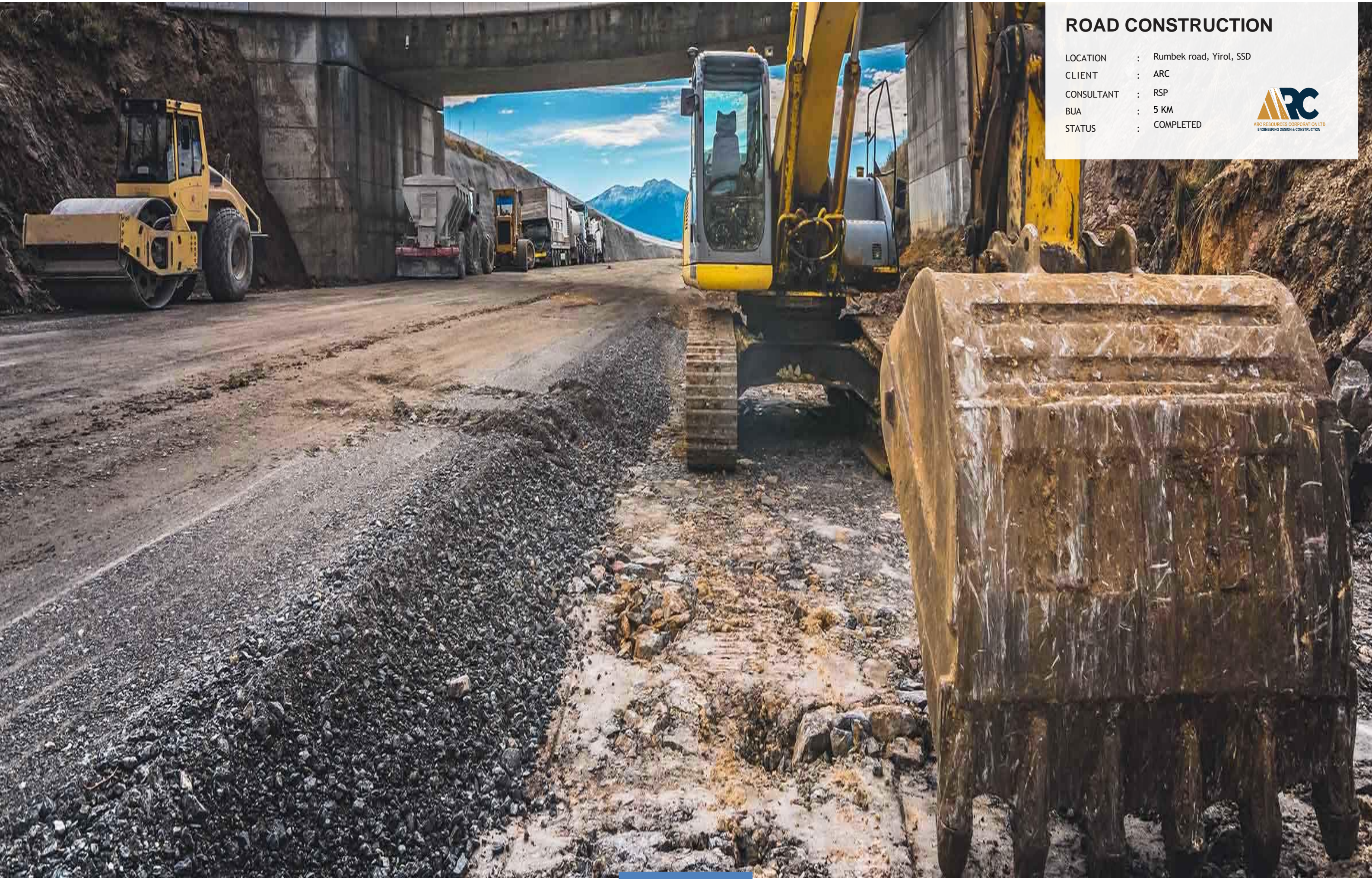
PREFAB WAREHOUSES

LOCATION : JUBA, SSD
CLIENT : AZ company
CONSULTANT : ENG. SAM
BUA : 30 X100 M
STATUS : COMPLETED



ROAD CONSTRUCTION

LOCATION : Rumbek road, Yírol, SSD
CLIENT : ARC
CONSULTANT : RSP
BUA : 5 KM
STATUS : COMPLETED



PROJECTS > INFRASTRUCTURE

ROAD CONSTRUCTION

LOCATION : Torit-Kapoeta-Nadapal highway, JUBA, SSD
CLIENT : ARC
CONSULTANT : RSP
BUA : 20 KM
STATUS : COMPLETED





PROJECTS > INFRASTRUCTURE

ROAD CONSTRUCTION

LOCATION : Bor highway, JUBA, SSD
CLIENT : ARC
CONSULTANT : RSP
BUA : 5 KM
STATUS : COMPLETED



BANK OF SIERRA LEONE

LOCATION : Freetown, SL
CLIENT : BANK OF SIERRA LEONE
CONSULTANT : HVR
BUA : 7,200 SQM
STATUS : COMPLETED



PROJECTS > EMBASSIES

NIGERIAN EMBASSY RENOVATION

LOCATION	:	FREETOWN, SL
CLIENT	:	NIGERIA HIGH COMMISSION SIERRA LEONE
CONSULTANT	:	KWA K
BUA	:	1,800 SQM
STATUS	:	COMPLETED



**NIGERIA HIGH
COMMISSION
SIERRA LEONE**



PROJECTS > EMBASSIES

AMERICAN EMBASSY EXTENTION

LOCATION : FREETOWN, SL
CLIENT : AMERICAN EMBASSY
CONSULTANT : AMU CONSULTANT
BUA : 750 SQM
STATUS : COMPLETED



PROJECTS > MIXED- USE DEVELOPMENTS

MAERSK LINE HQ

LOCATION : FREETOWN, SL
CLIENT : MAERSK LINE
CONSULTANT : ENG. KANU
BUA : 1,550 SQM
STATUS : COMPLETED



PROJECTS > SUBSTATIONS

ELECTRICAL SUBSTATION

LOCATION : FREETOWN, SL
CLIENT : EDSA
CONSULTANT : ENG. M. BANGOURA
BUA : 1,400 SQM
STATUS : COMPLETED



CONTACT INFORMATION

LET'S GET SOME WORK DONE

South Sudan [HQ]

Atlabara C **HQ**, Tombra Road,
Juba, South Sudan

T +211 92 833 3331

T +211 92 205 0000

E info@lelty.com

United Arab Emirates

1b Al Maktoum Rd, Deira, Al Rigga , Dubai -
United Arab Emirates

T +971 4 251 7488

E info@peacelandgt.com

Sierra Leone

85 Sir Samuel Lewis Road, Aberdeen, Freetown,
Sierra Leone

T +232 80 100 100

T +232 77 300 200

E info@homedesigngroups.com

FOLLOW US !

